



## Widow Scout

Light Vehicle  
Coalition



SIG	SPD	SCAN	TARG	DEF	CM
Small	8"	7	5	14	1

Actions	Cost	Range	ROF	Effect
Scanner [SCAN]	A	14"	3	REVEAL
MG (VS Infantry only)	A	12"	2	KILL

**Deploy Drones** C - - ★

Place the Sub-Units of a Spider Drone: Infiltrator Unit within 3' of this Unit. They are not part of the current Taskforce. This Unit may use this Action once per game.

### Traits

**CARRIER** [Spider Drone: Infiltrator]: When this Unit is added to a Force one Spider Drone: Infiltrator Unit is also included.

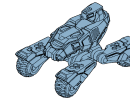
GENERATED: 2024-02-06 13:28:44

B4.2.0



## Sentinel: Tagger

Light Vehicle  
Coalition



SIG	SPD	SCAN	TARG	DEF	CM
Small	8"	-	6	14	1

Actions	Cost	Range	ROF	Effect
Tag Cannon	A	16"	2	STUN

» **TAGGED:** Units/Sub-Units hit by this weapon suffer -2 DEF until the end of this Taskforce Activation. A Unit/Infantry Base can only be Tagged once.

GENERATED: 2024-02-06 13:28:44

B4.2.0



## Virago

Medium Vehicle  
Coalition



SIG	SPD	SCAN	TARG	DEF	CM
Medium	6"	-	6	13	2

Actions	Cost	Range	ROF	Effect
Close Medium Cannon	A	24"	2	KILL

» **CLOSE AND PERSONAL** [+1 TARG]: This Action gains an additional +1 TARG against targets within short range.

GENERATED: 2024-02-06 13:28:44

B4.2.0



## GSV: Phantom

Ground Support Vehicle  
Coalition



SIG	SPD	SCAN	TARG	DEF	CM
Medium	6"	6	5	13	1

Actions	Cost	Range	ROF	Effect
Scanner [SCAN]	A	12"	1	REVEAL
Double Cannon	A	16"	2	KILL

**Target Lock** C - - ★

Select an enemy Unit in LOS. It suffers -2 DEF until the end of this Taskforce Activation. A Unit can only be Target Locked once. This Action can be used once per activation.

### Traits

**ADAPTIVE CAMO** [+1 DEF]: When this Unit benefits from Concealment it gains an additional +1 DEF.

**AMBUSH:** When declaring participating Units of a Reaction Engagement, select a Ping matching this Unit's SIG. This Unit is immediately Revealed using the selected Ping and becomes a participating Unit in the Reaction Engagement. If the selected Ping has an Activated Token it is immediately removed. Ambush may only be used if this Unit has not been Revealed yet.

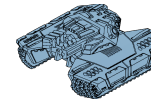
GENERATED: 2024-02-06 13:28:44

B4.2.0



## Guardian: Destroyer

Heavy Vehicle  
Coalition



SIG	SPD	SCAN	TARG	DEF	CM
Large	5"	-	6	13	3+1

Actions	Cost	Range	ROF	Effect
HMG (VS Infantry only)	A	12"	3	KILL
Smart Medium Cannon	A	24"	2	KILL

» **SMART** [CM 5+]: Countermeasure rolls attempting to negate this weapon's effect are successful on a 5+ (instead of 3+).

### Traits

**SENTRY:** This Unit gains +1 to Reaction Priority Rolls.

**EMERGENCY CM** [+1]: This Unit begins the game with 1 Emergency Countermeasure Token (indicated as +1 under CM). Emergency CMs automatically succeed and do not regenerate.

**ALL TERRAIN:** This Unit ignores terrain movement penalties.

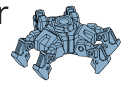
GENERATED: 2024-02-06 13:28:44

B4.2.0



## Spider Drone: Infiltrator

Robotic Infantry Squad 2  
Coalition



SIG	SPD	SCAN	TARG	DEF	CM
-	6"	-	6	14	-

Actions	Cost	Range	ROF	Effect
Claws	A	1"	1	KILL

» **SPECIALIZED:** +2 TARG vs Infantry targets.

» **CLOSE COMBAT:** Ignores Concealment and short range modifiers.

**Go Dark** C - - ★

This Unit gains a Stealth Token.

### Traits

**STEALTHY:** This Unit begins the game with a Stealth Token.

**ALL TERRAIN:** This Unit ignores terrain movement penalties.

**PACKAGED** [Widow Scout]: This Unit cannot be added directly to a Force. It is automatically included with a Widow Scout Unit.

### Notes

**STEALTH TOKEN:** A Unit with a Stealth Token can only be targeted by enemy Actions with a REVEAL effect. A Unit loses the token when it performs a Combat Action or it suffers a REVEAL effect or an enemy Unit is within 2" after any Unit ends a move. A Unit cannot gain a Stealth Token if an enemy Unit is within 2" and cannot have more than 1.

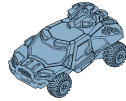
GENERATED: 2024-02-06 13:28:44

B4.2.0



## Harbinger

Light Recon Vehicle  
Republic of Terra



SIG	SPD	SCAN	TARG	DEF	CM
Small	7"	7	6	14	1

Actions	Cost	Range	ROF	Effect
Scanner [SCAN]	A	12"	2	REVEAL

Shock Autocannon	A	16"	2	STUN
------------------	---	-----	---	------

» **DEADLY** [Infantry]: This weapon's effect is KILL for Infantry targets.

**Forward Observe** A/C - - ★

A Unit in the same Taskforce immediately resolves its Unit Activation with an Action that has the Fire Support trait using this Unit's LOS. This Action can be used once per activation.

GENERATED: 2024-02-06 13:28:44

B4.2.0



## Vector Squad

Human Infantry Squad 3  
Republic of Terra



SIG	SPD	SCAN	TARG	DEF	CM
Small	4"	-	6	12	-

Actions	Team	Cost	Range	ROF	Effect
Rifle (VS Infantry only)	1-2	A	12"	1	KILL

AT Charges (VS Vehicles only)	1-2	A	6"	1	KILL
-------------------------------	-----	---	----	---	------

» **ADVANCED** [CM 4+]: Countermeasure rolls attempting to negate this weapon's effect are successful on a 4+ (instead of 3+).

» **CLOSE COMBAT**: Ignores Concealment and short range modifiers.

**Micro Artillery** 3 A 16" 1 KILL

» **INFANTRY NETWORK**: Attacks from this weapon can use the LOS of Infantry Teams in this Unit.

» **ADVANCED** [CM 4+]: \*

### Traits

**ADAPTIVE CAMO** [+1 DEF]: When this Unit benefits from Concealment it gains an additional +1 DEF.

**ALL TERRAIN**: This Unit ignores terrain movement penalties.

**MECHANIZED**: This Unit may begin the game mounted in a Courier transport. If it does its Ping is not used for the game.

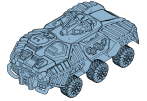
GENERATED: 2024-02-06 13:28:44

B4.2.0



## Courier

Medium Transport  
Republic of Terra



SIG	SPD	SCAN	TARG	DEF	CM
Medium	6"	6	6	13	2

Actions	Cost	Range	ROF	Effect
Scanner [SCAN]	A	10"	1	REVEAL

Cannon	A	16"	1	KILL
--------	---	-----	---	------

**Unload** [Free Action, 3"]: The carried Unit is Placed within 3". They become part of the current Taskforce and may immediately perform an Action then gain an Activated Token. If the Unloading Unit performs a Move Action it may not move within 2" of an enemy Ping.

**Load** [Free Action, 3"]: Place an eligible Unit within 3" in this transport. Units that forfeited their movement in the movement phase or their Action Point are eligible. This Unit cannot perform a Load and an Unload Action in the same Activation.

### Traits

**DEFEND** [Infantry, 4"]: Infantry within 4" can spend this Unit's Countermeasure Tokens. This may only be used by Units with a CM stat of "-".

**TRANSPORT** [Small SIG Infantry]: This Unit may be designated the dedicated transport of a small SIG Infantry Unit from your force with the Mechanized trait.

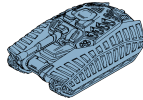
GENERATED: 2024-02-06 13:28:44

B4.2.0



## Crusader

Medium Tank  
Republic of Terra



SIG	SPD	SCAN	TARG	DEF	CM
Medium	7"	-	7	13	2

Actions	Cost	Range	ROF	Effect
Medium Cannon	A	24"	2	KILL

### Traits

**FINISHER** [+1 TARG vs zero CM]: This Unit gains +1 TARG against targets that currently have zero Countermeasures.

**DEFEND** [Infantry, 4"]: Infantry within 4" can spend this Unit's Countermeasure Tokens. This may only be used by Units with a CM stat of "-".

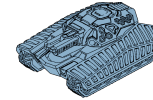
GENERATED: 2024-02-06 13:28:44

B4.2.0



## Samson

Heavy Tank  
Republic of Terra



SIG	SPD	SCAN	TARG	DEF	CM
Large	5"	-	7	12	3+1

Actions	Cost	Range	ROF	Effect
Smart Medium Cannon	A	24"	2	KILL

### Traits

» **SMART** [CM 5+]: Countermeasure rolls attempting to negate this weapon's effect are successful on a 5+ (instead of 3+).

**PREDATOR** [+2 TARG]: This Unit gains +2 TARG against Stunned Units.

**EMERGENCY CM** [+1]: This Unit begins the game with 1 Emergency Countermeasure Token (indicated as +1 under CM). Emergency CMs automatically succeed and do not regenerate.

**ALL TERRAIN**: This Unit ignores terrain movement penalties.

GENERATED: 2024-02-06 13:28:44

B4.2.0